

SIPTU MEMBERS' SERVICES – PREPARING FOR THE FUTURE

SIPTU is implementing major improvements and an expansion of its services to members.

In order to further this process the SIPTU Biennial Delegate Conference 2017 unanimously backed a new development plan for the union which requires significant investment in resources and campaigns. The conference ratified an increase of 30 cent for members on incomes of more than €500 weekly from January 2018. The weekly dispute benefit for these members will rise by €20 to €220 per week.

THE WORKERS RIGHTS CENTRE

The Workers Rights Centre (WRC) ensures that SIPTU members receive the best quality advice and representation when they encounter a problem as an individual at work.

The WRC has 24 advocates with legal expertise in bases across the country, who represent members at local enterprise level as well as at hearings in the various employment rights adjudication and appeal bodies. Additionally the Centre's Information Assistants can be contacted by phone and email and provide information on a wide range of issues to members.

An initiative of the SIPTU Legal Rights Unit, since its establishment in 2010 the WRC has dealt with over 25,000 individual cases and secured for many members improved conditions as well as, for others, awards and settlements totalling over €29.4 million.

COMMUNICATIONS

SIPTU Communications produces the leading trade union newspaper in Ireland, Liberty, and Liberty Online as well as thousands of leaflets and other materials for all the Divisions, Sectors and Sections of the union.

SIPTU Communications has greatly increased its video output on its website, Facebook and other social media outlets.



WELCOME CENTRES

With the aim of bringing the union directly back into communities, since 2016 SIPTU has opened Welcome Centres in locations across the country.

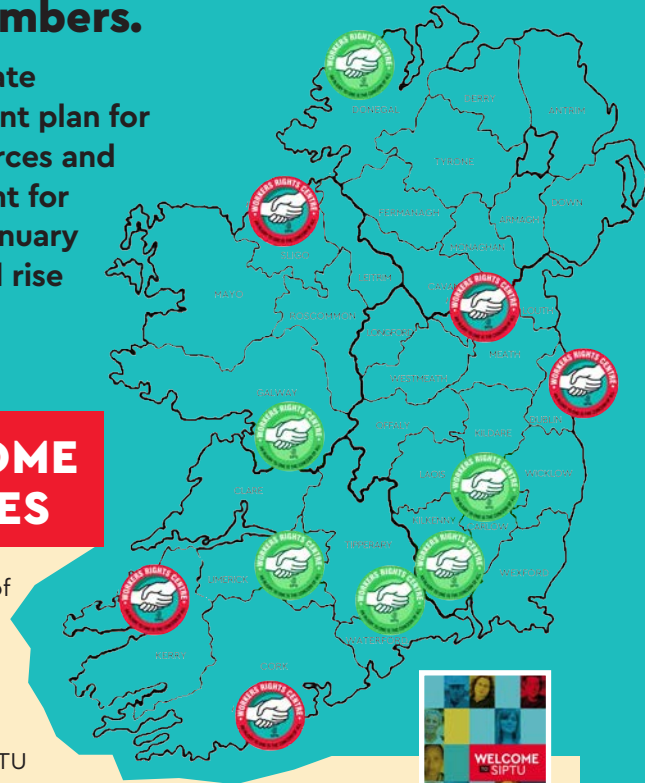
Welcome Centre staff provide assistance and advice to union members and potential members on a wide array of workplace issues. These centres also provide a focal point for SIPTU organising in local communities through District Councils.

During 2016 and 2017, Welcome Centres were opened in Liberty Hall in Dublin, Connolly Hall in Cork, The Dan Shaw Centre in Navan, County Meath, Connolly Hall in Tralee, County Kerry and the SIPTU Offices, Hanson Retail Park, in Silgo.

Further centres will be opening in Galway, Kilkenny, Carlow, Letterkenny, Limerick and Waterford in the coming months (indicated on the map above by the green symbol) with more to follow.

THE IDEAS INSTITUTE

The IDEAS Institute, which is based in SIPTU College, Dublin offers a wide range of QQI accredited training courses to members. These courses include: 'Computer Literacy Skills' 'Personal Effectiveness in the Workplace' and 'Train-the-Trainer'.



ORGANISING

Our core aim has always been, and will continue to be, organising ever greater numbers of workers into a union capable of bringing about progressive change in Ireland, on a workplace, community and State level.

- **Young workers**

The union will be reinvigorating the Young Workers' Network as well as continuing to strengthen our relations with the Union of Students in Ireland and the Irish Secondary Students Union.

- **Retired Members**

The remit of the Retired Members Section will be extended to include a role in the operation of the Welcome Centres, education and training.



- **Gender Equity**

Emphasis is to be placed on increasing female participation within the union.

- **Organising Migrant Workers**

Migrant Workers Support Network will be developed throughout the union.

- **Organising at Local Level – District Councils**

District Councils have the responsibility for liaising with local union structures and campaigns as well as organising, education, training and development of activists and the wider membership.

- **Decent Work, Decent Lives**

Research, organising and campaigning resources will be deployed in a co-ordinated push to ensure all workers can be ensured fair and decent conditions at work.



Get the latest from SIPTU Health "on the move" by

DOWNLOADING OUR APP



FREE for iPhone and Android

SIPTU COLLEGE

The college provides training on health and safety, legal rights, negotiating, organising, media appearances and learning about important disputes in order to arm activists with the skills they need to be effective trade unionists. An ambitious plan to greatly increase the number of courses provided by SIPTU College, both at its premises on the South Circular Road in Dublin and across the country, is currently underway.



MEMBERS BENEFITS

Our union is continuing to expand and improve the wide range of other supports and benefits available to members, these include:

- Car Insurance
- Home Insurance
- Travel Insurance
- Income Protection Plan
- Mortality Benefit
- Death Benefit for Spouse
- Retirement Benefit
- Education & Development Support Scheme
- Scholarships
- Free Basic English Scheme
- Tax Back Refund
- Credit Union (for members based in and around Dublin)

CULTURE

Every week the Liberty Hall auditorium and other union venues across the country are the focal point of union cultural and social events. These help to bond our union together as well as to commemorate our proud history and achievements.

HEALTH AND SAFETY

Health and Safety backup support is provided to activists by the SIPTU Health and Safety Unit. This includes the provision of information, advice and representation.

CAMPAIGNS

The union works for justice in society, playing a leading role in campaigns including for the introduction of Sectoral Employment Orders for workers in construction and other industries. The union organises public mobilisations and uses social media and online campaigning to promote the interests of working people.

Unsocial Hours/Overtime	Pay
Monday to Friday Normal Working Time to 10:00pm	Time and a half
Saturday to Sunday Monday to Wednesday Daily Time	Double Time
Public Holiday First 4 Hours from Normal Shift Time All additional hours to 10:00pm	Time and a half
Sunday All Hours Worked	Double Time
Public Holiday All Hours Worked	Double Time

Grade	Rate
Craft Rate	€18.93
Class 2/Grade A (Technical Operative)	€18.36
Class 1/Grade B&C (Skilled and Semi-Skilled Operative)	€17.04
New Entrant Worker	€12.77

The Grading Time (up to 6 per week) recorded by SIPTU for its Craft/Operative members from 1/10/17 will be a payment in addition to the rates outlined above.

1890 747 881

Services Industrial
Professional and
Technical Union
Liberty Hall,
Eden Quay, Dublin 1
Tel: 1890 747 881
www.siptu.ie

**JOIN SIPTU
ONLINE**
www.siptu.ie